



Planet Croxley

2025 Social Impact Report

Croxley Park 

Introduction

This report marks the second year that Croxley Park has measured the social value created for its surrounding environment and community. It provides an overview of the activities undertaken in 2025 and shows clear progress, including a notable increase in engagement with local communities and the delivery of several strategic priorities.

The report continues to follow leading industry frameworks, drawing on guidance from the 2022 UK Government Green Book and other recognised sources to ensure a structured and transparent assessment of impact.

While some data gaps remain, the improvements since last year have enabled a more complete picture of activity. This year's findings strengthen the previously established baseline and reflect a more embedded, mature



2025 Social Impact report

Overview

£5.9m

Worth of social value generated in 2025

110% increase on 2024

The overall social value figure reflects all activities with sufficient data to be measured and aligned to a relevant framework. This year, charity and community emerged as the strongest pillar, supported by significantly improved data collection that provides a more accurate view of impact. As data quality has improved across all pillars, this year's findings present a more representative balance of Croxley Park's total social value. The figures combine direct financial contributions, such as donations, with the £ social value equivalents assigned through leading measurement frameworks.

£1.8m+

worth of social value

Environment

280% increase

£3.8m+

worth of social value

Community & Charity

£6k+

worth of social value

Local Skills & Employment

£124k+

worth of social value

Local Economy
12,300% increase

Charity & Community



Charity & Community

Significantly surpassing 2024's figures, Croxley Park continued to create real value within local communities by actively supporting Voluntary, Community, and Social Enterprises (VCSEs). While community events remained a key focus in 2025, sparking connection, curiosity and community spirit, two key developments drove the 273% overall increase in social and local economic value. Firstly Croxley Park has provided multiple charities with free office space, generating significant social value. Secondly, charitable donations increased considerably in 2025, reflecting a strengthened commitment to fundraising initiatives. Looking ahead, further improving tracking and data collection will enable a more accurate measurement of positive outcomes, ensuring the full extent of Croxley Park's contributions is captured, recognised and continually built upon.

Breakdown of quantified activity

The bold figures represent £ social value equivalent according to leading frameworks where as the non bold text represents actual £ spend & Investment to drive social value.

Use of meeting & events space	£6,200	+620%
Employee time volunteered including organisation of events	£5,600	
Providing community with physical activity space	£69,700	
Attendance at community events	£1.3M	+57.5%
Donations	£14,500	+700%
Spend on events	£187,000	£131,345
Free space provided to charities	£2.3m	
Total Social and Local Economic Value	£3.88M	+273%



Other Key Figures & Activities

**Use of
on site space**

45 days

Of free space provided to
Voluntary, Community & Social
Enterprises (VCSEs) free of
charge

**Spend on
community
initiatives**

£200k

Spent on holding community
events and making direct
financial contributions to
organisations

**Community
events**

6,600+ people

Attendees at community events
held by Croxley Park
across the year

**Employee
volunteering**
300+ hours

Paid employee
time spent supporting
community organisations

**Green space
& access to
sports facilities**
430+ people

Occupiers & local residents
provided with access to green
space and sports facilities

26 Charities
**Charities provided
with free
office space**

Given free space with utility
bills paid for by
Croxley Park

Case Study

Free space for charities

At a time when many voluntary organisations face financial uncertainty and rising operational pressures, Croxley Park has taken meaningful action by offering multiple charities free office space. By fully covering service charges and utilities, Croxley Park removes the practical and financial barriers that often limit a charity's ability to grow, giving them the stability, dignity and professional environment they need to focus their efforts entirely on their mission.

This initiative transforms more than just where these organisations work. It strengthens their operational capacity, fosters collaboration within the wider business community and creates a sense of belonging that many charities rarely experience in commercial environments. The result is tangible: supported charities have more time, more resources and more energy to dedicate to the people who rely on them most.

"I just wanted to explicitly thank you for allowing us to utilise the space at building 9 of Croxley Business Park. We've had quite a tumultuous time over the last few years at Ansar Youth Project, having moved youth centres 3 times in the last 3 years. Having our office space at Croxley Park has given us much needed stability and allowed me to run the operations side of the charity so much more effectively. I want you to know how grateful we are for this opportunity; it genuinely came at the perfect time, and the impact on our work has been substantial. Thank you again for your support - it has meant more than you realise."

Head of Operations at Ansar Youth Project



Local Economy



Local Economy

In 2025, Croxley Park strengthened its commitment to supporting the local economy by not only increasing opportunities for small businesses, but also tracking local economic spend for the first time. This new data has provided a clearer picture of the scale and effectiveness of Croxley Park’s support for local enterprises, as well as highlighting areas for improved collaboration and support.

Croxley Park continues to champion local businesses by giving them opportunities to sell products on-site, therefore widening access to new customers and increasing their visibility. Local suppliers are also regularly engaged across events and activities, ensuring that spending remains within the community and directly benefits small, independent businesses.

This year’s new data shows the impact of these efforts. For example, use of the Crafted Kitchen by local businesses increased by 177%, demonstrating Croxley Park’s growing role as a hub for entrepreneurial activity. Expanding the use of local suppliers across wider operational areas would keep even more spending within the community. Additionally, developing long-term partnerships or support programmes for local businesses could provide stability, stimulate growth and further amplify Croxley Park’s positive economic impact.

Use of Crafted Kitchen for local business	£1,000	+177%
Employee time spent organising	£810	+10%
Total Social and Local Economic Value	£1,810	+65%



Other Key Figures & Activities

**Local
business
support**

15

**Local
businesses**

Provided with space to sell
their products in Croxleys
Crafted Kitchen

**Using local
suppliers**

£123k

Spent with local
suppliers to support
activity at
Croxley Park

"I've been working with Croxley Park since 2022, and they have been extremely supportive of my small business ever since and are a large reason as to why my business has grown. I have regularly supplied brownies to their Christmas event, held biscuit decorating workshops, made afternoon tea boxes & treat boxes for other events - all of this has been great for me to create and expand my business by getting my products out to new potential customers. In 2025 I was kindly invited to try out a market stall in their cafe, another great opportunity for me to offer for their occupier's new bakes and products that aren't typically available to purchase in different flavours unless it's at a market. The event team at Croxley are well organised and informative about the events, open to ideas, for example, what items to put into the afternoon tea boxes and executing the events that are so amazing and to be a small part of it is something I am very grateful for."

Happy Bakes Happy Cakes (Local Baker)

"As someone working towards my business from a side project into a full-time career, Croxley Park has been incredibly supportive in helping me make that happen. They've provided opportunities for me such as hiring me to host chocolate masterclasses, chocolate decorating sessions and cocktail masterclasses and have supported me every step of the way. I love their events, everyone is so lovely. Through this support, I've gained more business from people across the park, as well as new customers through their social media exposure. My goal is to eventually leave my current job and run Lucho Lounge full time and Croxley has genuinely given me the platform and visibility to move closer to that dream. They've offered consistent work and have been a really loyal and supportive company to work with!"

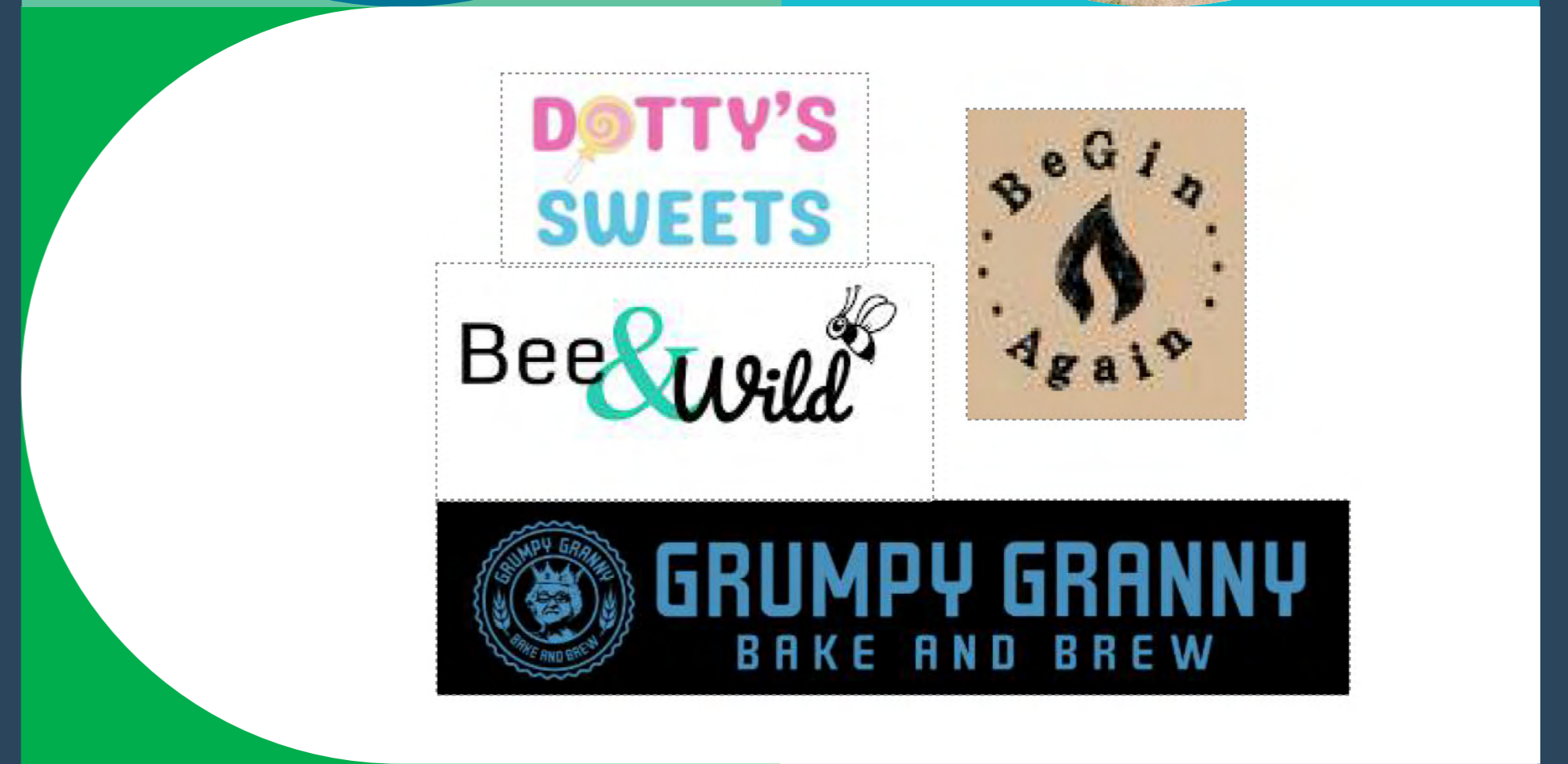
Lucho Lounge (Local Chocolatier)

Case Study

Community events: Using Local Suppliers

In 2025, Croxley Park delivered a vibrant calendar of community events designed to inspire connection, creativity and wellbeing. From mindful, hands-on workshops to large scale themed events, the programme brought people from the wider community together through engaging shared experiences. Business parks play an increasingly important role within their local areas as they are not isolated commercial zones, but integral parts of the communities around them. Croxley Park clearly recognises this, embedding community events into the fabric of campus life to support the local economy, promote social wellbeing and enhance the daily experience of occupiers and visitors alike.

Central to this approach is a strong commitment to using local suppliers. In addition to showcasing local products and makers through on-site stalls, Croxley Park ensured that each event in 2025 drew on the talents and services of local businesses. Experiences, equipment, decorations, entertainment, staffing and food and drink were intentionally sourced from nearby suppliers. For example, the popular Halloween event relied heavily on local suppliers, from dancers and stilt walkers to fun fair stalls, face painters, hay bales and craft stalls. By consistently supporting local business growth, Croxley Park continues to foster a welcoming, inclusive environment that contributes positively to the social fabric of the surrounding area.



Environment

Environment

Croxley Park continues to demonstrate a strong and sustained commitment to environmental responsibility, building on previous investment and expanding its portfolio of sustainability initiatives. The Park's efforts now span a broad range of activities that not only enhance on-site environmental performance but also encourage greener behaviours among occupiers and the wider community. Significant progress has been made across core operational areas. Ongoing initiatives, including enhanced recycling systems, cardboard baling, food waste composting and the use of solar panels, are helping to lower emissions and embed long-term sustainable practices across the site. Importantly, the environmental focus extends well beyond day-to-day site management. Croxley Park actively encourages occupiers and local residents to participate in sustainability initiatives through awareness campaigns, events and hands-on activities that promote responsible environmental behaviours. By engaging the community in meaningful ways, the Park plays a key role in driving a wider shift towards sustainability across the local area.

Investment into environmental initiatives	£350,000	
Investment into biodiversity	£23,000	+4.6%
Reductions in CO2e through PV panels	£887,000	+28%
Recycling initiatives	£613,000	+6%
Total Social and Local Economic Value	£1,893,000	+8.4%



Other Key Figures & Activities

Initiatives to safeguard the environment

Spent on activities to reduce impact on the environment including protect local biodiversity.

370k

Protecting the natural environment & wildlife

Croxley Park actively protects and promotes the growth of key native species by preserving their natural habitats.

7

Native species protected



Cardboard bailing



Clothes swap event



Food composting



Rainwater harvesting

Reducing CO2e through green energy

The introduction of PV panels on two of the main buildings has significantly reduced CO2e emissions.

3,518

Tonnes of CO2e saved

Reducing onsite waste

A comprehensive recycling system has successfully diverted a significant amount of waste from landfill.

70

Tonnes of waste diverted from landfill



Free bus & minibus



EV chargers

Case Study

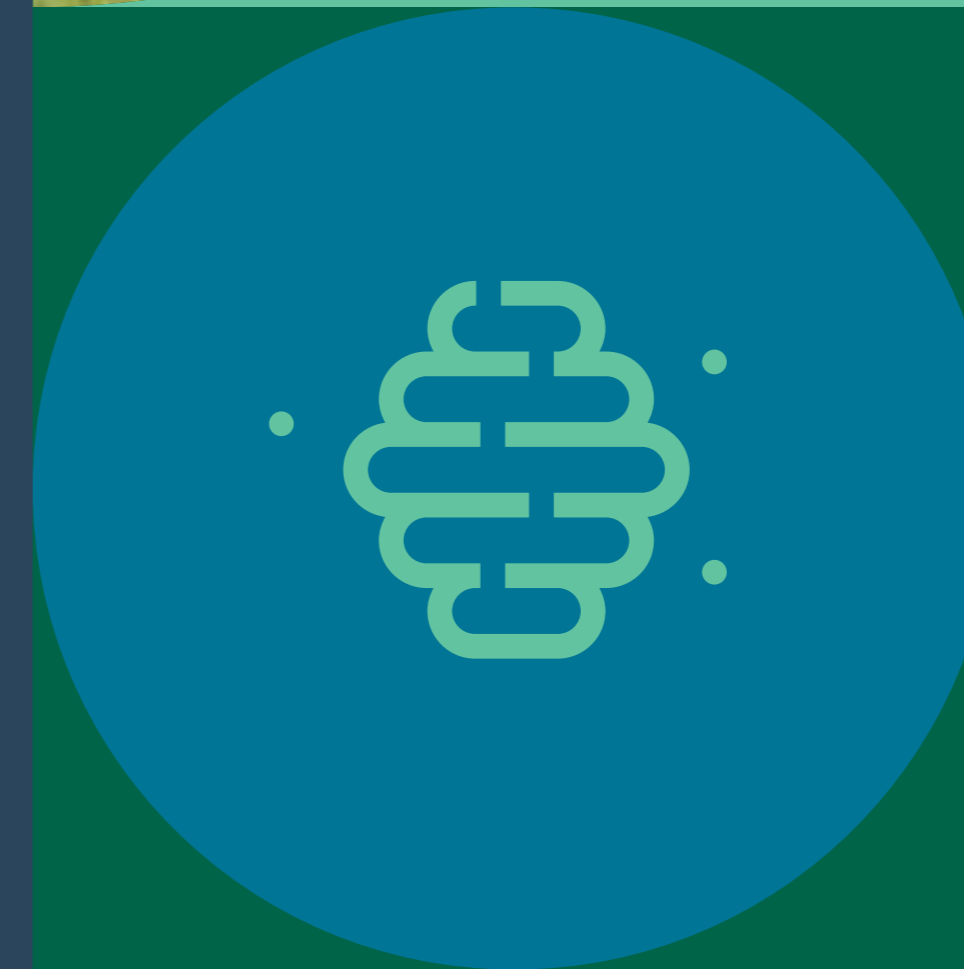
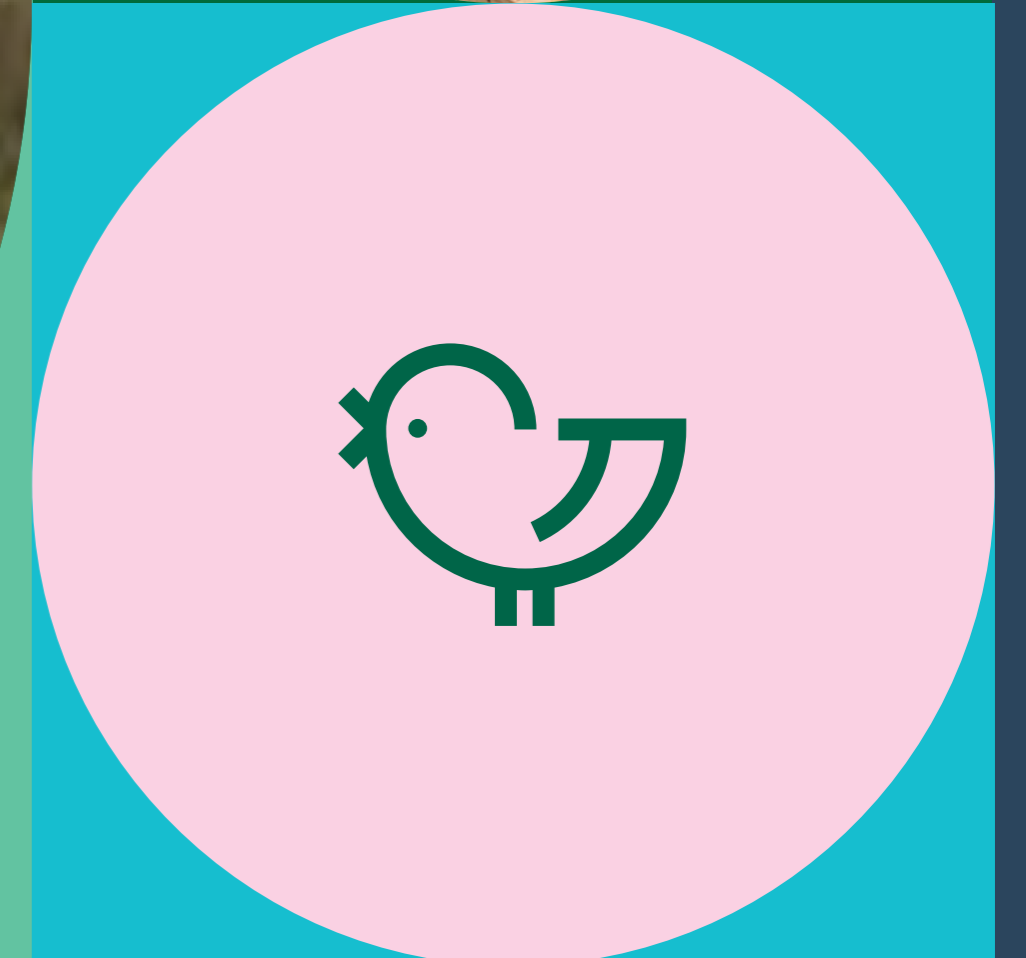
Community Engagement with Nature

Environmental stewardship and enhancing biodiversity remains a core focus at Croxley Park, which generates significant social value. Building on the success of 2024, there have been increased efforts to restore nature, operate in an environmentally sustainable way and promote ecological awareness. The Park has invested in thoughtful enhancements that not only protect local wildlife but also create inviting, nature-rich spaces for occupiers, visitors and the wider community.

In 2025, several meaningful additions were made to support wildlife, enhance green infrastructure and improve community access to natural spaces, including:

- The construction of 6 brand new vegetable beds- supporting sustainable food growing and encouraging community participation
- Improved nature trail access- new steps to encourage more people to explore and engage with the landscape
- Enhanced environmental education- two new nature information boards were installed beside the large ponds
- An additional full-time landscaper- helping maintain and enhance the environment
- New outdoor seating and amenities- 2 recycled-material benches and 5 new picnic benches with parasols were installed, creating a sociable outdoor space while promoting circularity

Under the watchful eye of Croxley Park’s resident beekeeper, local pupils continue to be invited to get “up close and personal” with the bees, fostering reconnection with nature and giving them a rare insight into life inside the Hive. School trips, such as the visit from St John’s Eco Club, provide a full-day immersive experience centred on planting, wildlife and sustainability. Alongside becoming mini beekeepers, children take part in recycling workshops at the gardener’s depot, guided walks through the Oasis and outdoor games, creating memorable learning moments beyond the classroom.



Local Skills & Employment



Local Skills & Employment

The site team at Croxley Park strengthened their commitment to developing local skills by significantly increasing engagement with nearby schools and educational institutions. This year saw a notable shift towards building deeper, more consistent relationships with local schools, creating regular opportunities for pupils to explore the world of work, learn about sustainability and engage with the Park's diverse community. Rather than focusing solely on work placements and apprenticeships, Croxley Park prioritised early-stage skills development by creating regular, meaningful opportunities for young people to learn, explore and build confidence. This increased engagement demonstrates Croxley Park's commitment to nurturing the next generation.

Time spent arranging and sourcing apprenticeships & work experience	£6,000
Total Social and Local Economic Value	£6,000



Case Study

SEN garden - Ascot Primary school

Croxley Park is dedicated to supporting local schools, students and staff by investing in projects and providing financial donations where they're needed most. Located just a short distance from Croxley Park is Ascot Road Primary School, a brilliant school that supports a high population of children with special educational needs and those whom English is their second language. In 2025, Croxley Park delivered a meaningful SEN garden transformation for the school, investing £4,640 in labour and construction costs alongside an additional £666 financial donation to the school. The redesigned garden has become a safe, nurturing and sensory-rich space that supports emotional regulation, creativity and social interaction. This project exemplifies Croxley Park's commitment to generating genuine social value within its local community. At a time when Watford schools are facing significant funding pressures, particularly given the high density of primary schools in the area, this investment has provided critical support where it is most needed. Staff described the transformation as "just fantastic news", adding that they "can't believe it", reflecting the impact the garden transformation has had on the school community.

"Sarah, you have been a great supporter of our school over the last few years and we are indebted to you for coming to our aid on numerous occasions. We do not take your kindness or the generosity of Croxley Park for granted."

Executive Headteacher, St John's Catholic Primary (a school that benefitted from Croxley Park's financial donations)

Other key figures & activities

Work experience

2

work experience placements arranged with occupiers

Through close collaboration with local schools, Croxley Park employees helped create two work experience opportunities for local students in 2025.

Mission EmployAble

1

New employee hired through a partnership with Mission EmployAble

Croxley Park successfully aided the partnership between the contract caterer and Mission EmployAble, who support young adults with learning disabilities to enter the workforce.



Figures Overview

The **bold figures represent £ social value equivalent** according to leading frameworks whereas the non bold text represents actual £ spend & Investment to drive social value.

Activity	Value
Use of meeting & events space	£6,200
Employee time volunteered including organisation of events	£5600
Providing community with physical activity space	£69,700
Attendance at community events	£1,308,200
Use of Crafted Kitchen for local business	£1,000
Time spent engaging local business	£800
Spend with small local suppliers	£123,000
Reductions in CO2e through PV panels	£887,000
Recycling initiatives	£613,000
Time spent arranging and sourcing apprenticeships & work experience	£6,000
Local community donations	£14,500
Spend on events	£187,000
Investment into environmental initiatives	£350,000
Investment into biodiversity	£23,000
Cost of providing free space to charities	£2,290,700
Engaging occupiers in social impact activities	£2,000
Total Social and Local Economic Value	£5,887,700

Further Information

Lana Goddard

ESG & Sustainability Associate Director, Social Value Lead

lgoddard@lsh.co.uk

07749 580 283

Rachel Olson

ESG & Sustainability Coordinator

rolson@lsh.co.uk

07745 111 477

**Lambert
Smith
Hampton**

This document has been prepared and checked in accordance with the Lambert Smith Hampton Quality Assurance procedures and authorised for release.

This document is for general informative purposes only. The information in it is believed to be correct, but no express or implied representation or warranty is made by Lambert Smith Hampton as to its accuracy or completeness, and the opinions in it constitute our judgement as of this date but are subject to change.

Reliance should not be placed upon the information, forecasts, indicative costs, potential opportunities for savings or energy reduction and opinions set out herein for the purpose of any particular transaction, and no responsibility or liability, whether in negligence or otherwise, is accepted by Lambert Smith Hampton or by any of its directors, officers, employees, agents or representatives for any direct, indirect or consequential loss or damage which may result from any such reliance or other use thereof.

All rights reserved. No part of this publication may be transmitted or reproduced in any material form by any means, electronic, recording, mechanical, photocopying or otherwise, or stored in any information storage or retrieval system of any nature, without the prior written permission of the copyright holder, except in accordance with the provisions of the Copyright Designs and Patents Act 1988.

Warning: the doing of an unauthorised act in relation to a copyright work may result in both a civil claim for damages and criminal prosecution.