

Building 1, Croxley Park

Progress Update

Update on progress, activities and what's coming up over the next month
Issue 01 – October 2019

Welcome to the first newsletter for the new ISG project at Croxley Park. For the next 20 months ISG will be transforming 'former building two' to demolish the old building and create a new larger building, modelled on the new building completed by ISG in October 2018. The new building will be extremely similar to the previous project, however this time one level taller.

The project update newsletters will be issued every couple of months to give you an insight into the progress of the project and provide fun updates into other activities the team have been getting involved with in and around the business park.

We hope you find these updates informative and interesting and we welcome any feedback or queries on the project, with the Site Manager, Mark Carstens being available and open to your questions anytime (mark.carstens@isgplc.com).

Meet Our ISG Managers:



Mark Carstens

Senior Construction Manager

Mark will be one of the first men on the project and will have an involvement in the projects day to day running from start to finish. Mark has a keen eye for detail and is keen to ensure this project is as much as a success as the previous phase, ensuring the team develop on any lessons learnt from the last project.

Construction Progress (Week 08 of 82)

- Demolition of the old existing building on programme and almost complete
- Duct installation for crucial services diversions on programme and almost complete



75Ton Excavator Arrives 24th Sept.



10day later, 90% Complete

For further information or to discuss how we could help your project please email Building1CroxleyPark@isgplc.com

Building 1, Croxley Park

Progress Update

Update on progress, activities and what's coming up over the next month
Issue 01 – October 2019

About us

The Croxley Park project is being undertaken by the ISG Thames Valley Division, based in Reading.

The division is constantly developing and winning new projects in and around the M4 corridor and Reading area.

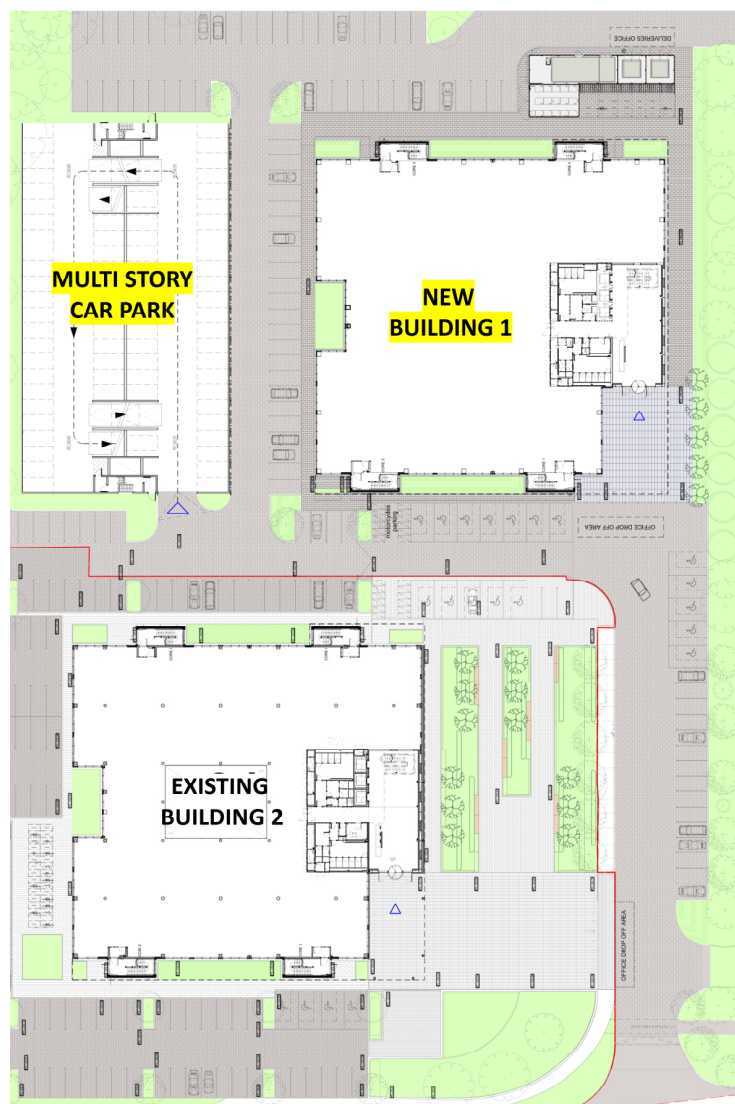
Currently the division is working on a range of projects from Guildford to Bristol and many sites in between.

Up-coming Works

- Removal of the existing ground floor slab and foundations
- Crushing all the demolished concrete and brickwork to construct the piling mat
- Services diversions which will allow us to construct the new multi-story car park
- Foundation construction for our Project Office
- And Piling will Commence early December

Further information about ISG can be found on our company website: <http://www.isgplc.com>

What we're building



- **New Building 1** – Like building 2, only 1 level taller
- **A Multi-Story Car Park** – serving Buildings 1 and 2
- **New Hard & Soft landscaping** – From Hatters Lane to and around Building 1

For further information or to discuss how we could help your project please email Building1CroxleyPark@isgplc.com