

Introducing 'The Hive'

Our ambition is to deliver Croxley Park the best amenity provision of any UK Business Park



The Croxley Team are excited to share with you our plans to deliver 'The Hive' scheduled to open in Q1 2019



Images are a visual guide only and subject to final construction

'The Hive' delivers an ALL NEW Café twice the size of the Waterside Café, A state of the art purpose built 7,500 sqft Gym & 'The Barn' a dedicated event space



Gym

A unique wellbeing
space for your
rejuvenation,
transformation and
recovery



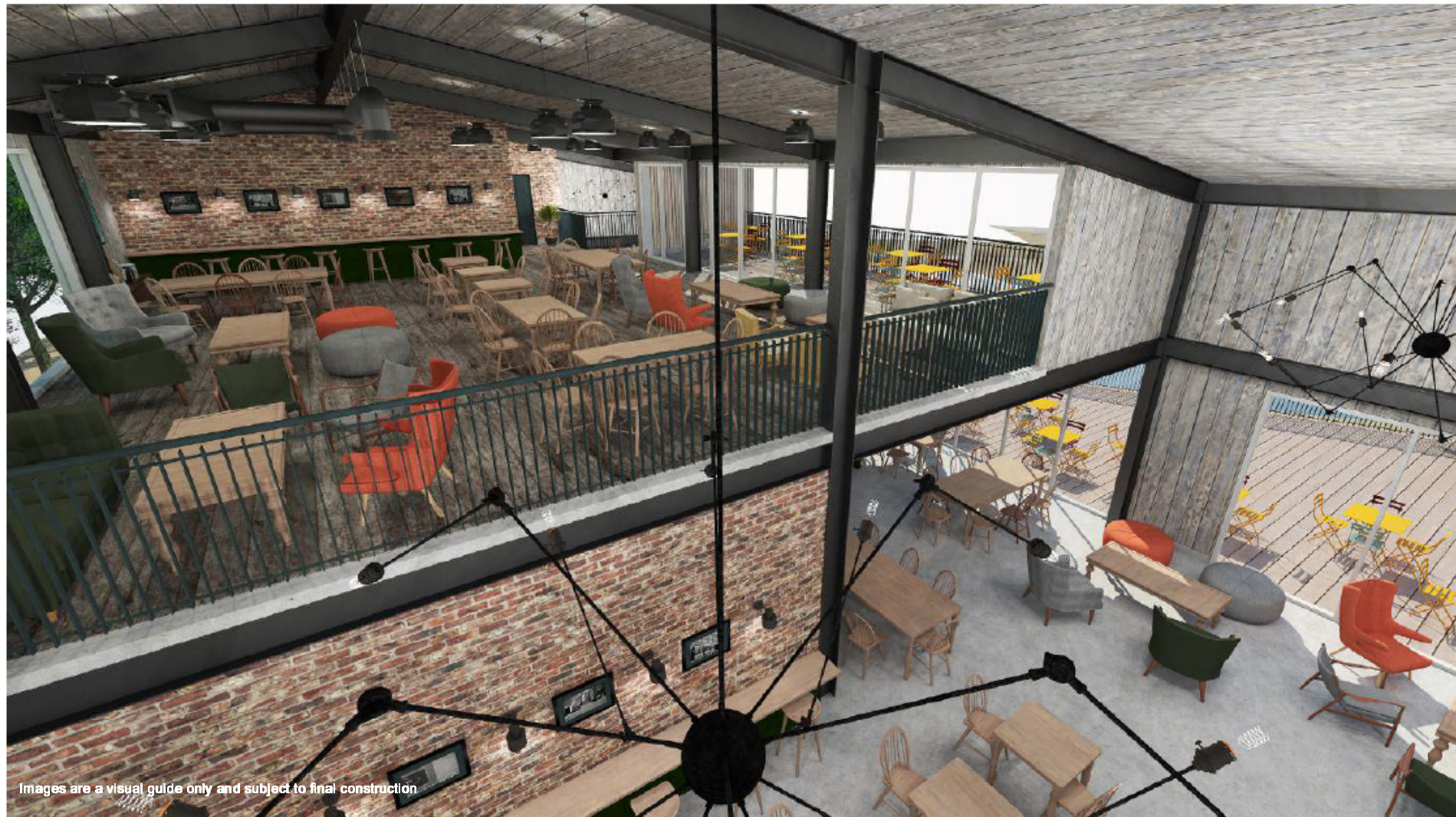
Images are a visual guide only and subject to final construction

A workout like no other, 'The Hive' delivers a state of the art equipped 2 storey wellbeing centre with inspiring views over the lake



Cafe

Coffee, chat & dine
over 2 floors with a
stunning view from
the terraced area
overlooking the lake



Images are a visual guide only and subject to final construction

Delivering the WOW factor, relax and dine in style, the all new café offers 200 seats, an unrivalled terrace area and a space for private dining



Fireworks, fete's, films,
sports, parties, BBQ's,
breakfasts, quizzes,
fun, games & more

The Barn

A multi-functional
event space, perfect
for entertainment,
celebrations and
presentations



Images are a visual guide only and subject to final construction

The Croxley Park Team believe 'The Hive' completely transforms the occupier amenities on the Park & by enhancing your Park experience we continue our journey to make Croxley Park an even better place to work **together**

We hope you share our excitement for our ambitious journey to provide the Croxley Park community with outstanding new amenities

'The Hive' will be delivered in Q1 2019 and during this development the existing Waterside Café will be closing on the 25th June 2018. 'Street food' caterers will provide an exciting eclectic range of on-site food & drink in the interim giving us a lively and varied alternative.

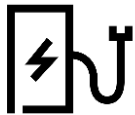
Notable changes during development include:

Amazon Locker



We are working closely with Amazon to provide you with an all new & improved locker provision to resemble our brand new amenity. In the interim the locker will be relocated to a new location on the Park, we will be sure to let you know where you can find it before moving day.

Electrical Charging Point



The electrical charging point will stay 'live' to keep you charged & on the move. If an alternative location is needed during the development we will of course find an alternative home on the Park.

The Management Office



The same service, different location! The Croxley Team will still be on-site & on hand, throughout 'The Hive' construction period you can pop in or contact us from our provisional management office on the Park, firm details will follow.

Bicycle Pump Station & Croxley Park Bikes



Our bicycle pump will be re-homed so you don't get caught with a flat! Our Croxley Park bikes will also still be available for hire from the management office so you can still enjoy that lunchtime cycle in the sunshine.

Stay up to date with the latest 'Hive' of information via our weekly News & Events email and our website www.croxleypark.com or you can contact the Croxley Park Team direct by emailing whatson@croxleypark.com